

District I

1625 N French Dr, Hobbs, NM 88240

District II

1301 W Grand Avenue, Artesia, NM 88210

District III

1000 Rio Brazos Road, Aztec, NM 87410

District IV

1220 S St Francis Dr, Santa Fe, NM 87505

State of New Mexico  
Energy Minerals and Natural Resources

Form C-101

June 16, 2008

Oil Conservation Division  
1220 South St. Francis Dr.  
Santa Fe, NM 87505

Submit to appropriate District Office

☐ AMENDED REPORT**APPLICATION FOR PERMIT TO DRILL, RE-ENTER, DEEPEN, PLUGBACK, OR ADD A ZONE**

<sup>1</sup> Operator Name and Address <b>PETROHAWK OPERATING COMPANY 1000 LOUISIANA STE 5600, HOUSTON, TX 7702</b>		<sup>2</sup> OGRID Number <b>194849</b>
<sup>3</sup> Property Code <b>302433</b>	<sup>4</sup> Property Name <b>STATE A A/C 2</b>	<sup>5</sup> API Number <b>30 - 025-39177</b>
<sup>6</sup> Well No <b>97</b>	<sup>7</sup> Proposed Pool 1 <b>EUNICE;SEVEN RIVERS-QUEEN, SOUTH</b>	
<sup>8</sup> Proposed Pool 2		

**7 Surface Location**

UL or lot no	Section	Township	Range	Lot Idn	Feet from the	North/South line	Feet from the	East/West line	County
<b>O</b>	<b>5</b>	<b>22S</b>	<b>36E</b>		<b>1304</b>	<b>S</b>	<b>2627</b>	<b>E</b>	<b>LEA</b>

**8 Proposed Bottom Hole Location If Different From Surface**

UL or lot no	Section	Township	Range	Lot Idn	Feet from the	North/South line	Feet from the	East/West line	County

**Additional Well Information**

<sup>11</sup> Work Type Code <b>N</b>	<sup>12</sup> Well Type Code <b>O</b>	<sup>13</sup> Cable/Rotary <b>R</b>	<sup>14</sup> Lease Type Code <b>S</b>	<sup>15</sup> Ground Level Elevation <b>3586</b>
<sup>16</sup> Multiple <b>NO</b>	<sup>17</sup> Proposed Depth <b>4000</b>	<sup>18</sup> Formation <b>QUEEN</b>	<sup>19</sup> Contractor	<sup>20</sup> Spud Date

**21 Proposed Casing and Cement Program**

Hole Size	Casing Size	Casing weight/foot	Setting Depth	Sacks of Cement	Estimated TOC
<b>12.25</b>	<b>8.625</b>	<b>24</b>	<b>1450</b>	<b>650</b>	<b>0</b>
<b>7.875</b>	<b>5.5</b>	<b>15.5</b>	<b>4000</b>	<b>725</b>	<b>0</b>

<sup>22</sup> Describe the proposed program. If this application is to DEEPEN or PLUG BACK, give the data on the present productive zone and proposed new productive zone. Describe the blowout prevention program, if any. Use additional sheets if necessary.

**RECEIVED**  
SEP 11 2008  
**HOBBS OCD**

<sup>23</sup> I hereby certify that the information given above is true and complete to the best of my knowledge and belief

Signature

*Eddie W Seay*

Printed name

**Eddie Seay**

Title

**Agent**

E-mail Address

**seay04@leaco.net**

Date

**9/9/08**

Phone

**575-390-2454**

OIL CONSERVATION DIVISION

Approved by

*[Signature]*

Title

**Geologist**

Approval Date

**9/25/08**

Expiration Date

**9/25/10**

CONDITIONS OF APPROVAL for Non-Standard Location:  
Intent to drill ONLY — CANNOT produce until the Non-Standard Location has been approved by OCD Santa Fe office

**Permit Expires 2 Years From Approval Date Unless Drilling Underway**

## DISTRICT I

1304 N. FRENCH DR., HOBBS, NM 88240

## DISTRICT II

1301 W. GRAND AVENUE, ARTESIA, NM 88210

## DISTRICT III

1000 Rio Brazos Rd., Aztec, NM 87410

## DISTRICT IV

1220 S. ST. FRANCIS DR., SANTA FE, NM 87505

## State of New Mexico

Energy, Minerals and Natural Resources Department

## OIL CONSERVATION DIVISION

1220 SOUTH ST. FRANCIS DR.  
Santa Fe, New Mexico 87505

Form C-102

Revised October 12, 2005

Submit to Appropriate District Office

State LEase - 4 Copies

Fee LEase - 3 Copies

## WELL LOCATION AND ACREAGE DEDICATION PLAT

☐ AMENDED REPORT

API Number <b>30-025-39177</b>	Pool Code <b>24130</b>	Pool Name <b>EUNICE-SEVEN RIVERS-QUEEN, SOUTH</b>
Property Code <b>302433</b>	Property Name <b>STATE A A/C 2</b>	Well Number <b>97</b>
OGRID No. <b>194849</b>	Operator Name <b>PETROHAWK OPERATING</b>	Elevation <b>3586'</b>

## Surface Location

UL or lot No.	Section	Township	Range	Lot Idn	Feet from the	North/South line	Feet from the	East/West line	County
0	5	22-S	36-E		1304	SOUTH	2627	EAST	LEA

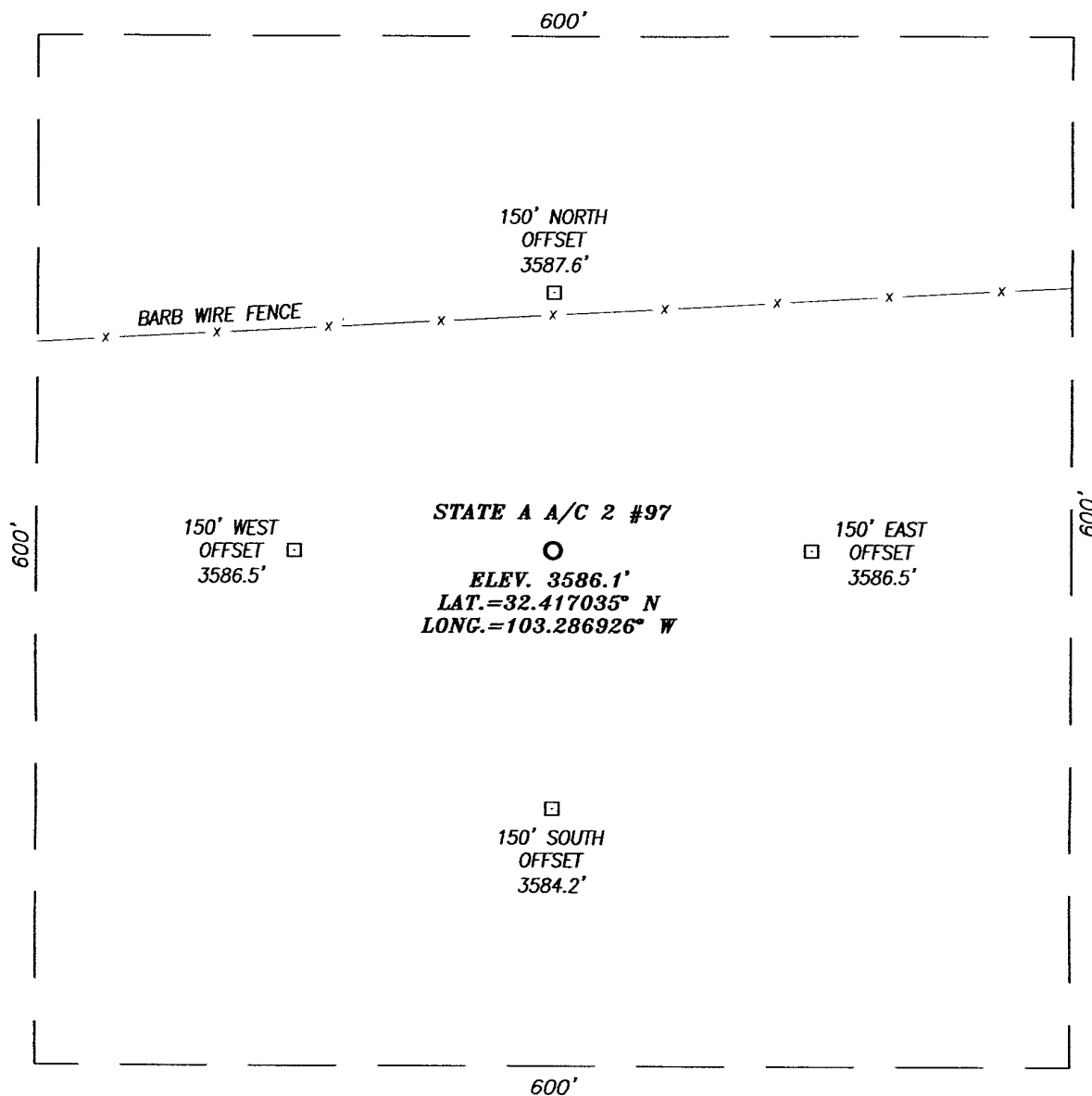
## Bottom Hole Location If Different From Surface

UL or lot No.	Section	Township	Range	Lot Idn	Feet from the	North/South line	Feet from the	East/West line	County
Dedicated Acres <b>40</b>	Joint or Infill	Consolidation Code	Order No.						

NO ALLOWABLE WILL BE ASSIGNED TO THIS COMPLETION UNTIL ALL INTERESTS HAVE BEEN CONSOLIDATED  
OR A NON-STANDARD UNIT HAS BEEN APPROVED BY THE DIVISION

LOT 4	LOT 3	LOT 2	LOT 1
<p>GEODETIC COORDINATES NAD 27 NME. SURFACE LOCATION</p> <p>Y=517012.5 N X=822911.7 E</p> <p>LAT.=32.417035° N LONG.=103.286926° W</p>			
<p><b>OPERATOR CERTIFICATION</b></p> <p>I hereby certify that the information herein is true and complete to the best of my knowledge and belief, and that this organization either owns a working interest or unleased mineral interest in the land including the proposed bottom hole location or has a right to drill this well at this location pursuant to a contract with an owner of such mineral or working interest, or to a voluntary pooling agreement or a compulsory pooling order heretofore entered by the division.</p> <p><i>Eddie W. Seay</i> 9/9/08 Signature Date</p> <p><i>Eddie W. Seay</i> Printed Name</p>			
<p><b>SURVEYOR CERTIFICATION</b></p> <p>I hereby certify that the well location shown on this plat was plotted from field notes of actual surveys made by me or under my supervision, and that the same is true and correct to the best of my belief.</p> <p>RONALD J. EIDSON 30.10.2008 Date Surveyed MEXICO DSS</p> <p>Signature &amp; Seal of Professional Surveyor 3239 <i>Ronald J. Eidson</i> 9/08/08</p> <p>Certificate No. GARY G. EIDSON 12641 RONALD J. EIDSON 3239</p>			

**SECTION 5, TOWNSHIP 22 SOUTH, RANGE 36 EAST, N.M.P.M.,**  
 LEA COUNTY, NEW MEXICO

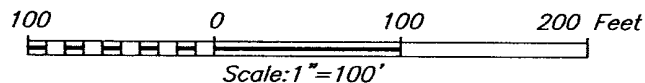


**DIRECTIONS TO LOCATION**

FROM THE INTERSECTION OF COUNTY ROAD #E21  
 (DELAWARE BASIN ROAD) AND COUNTY ROAD #E21  
 (WEAVER ROAD), GO EAST ON DELAWARE BASIN ROAD  
 APPROX. 0.8 MILES. TURN LEFT AND GO NORTH APPROX.  
 1.1 MILES. BEND LEFT AND GO WEST APPROX. 0.4 MILE.  
 THIS LOCATION IS NORTH APPROX. 467 FEET.



PROVIDING SURVEYING SERVICES  
 SINCE 1946  
**JOHN WEST SURVEYING COMPANY**  
 412 N. DAL PASO  
 HOBBS, N.M. 88240  
 (505) 393-3117

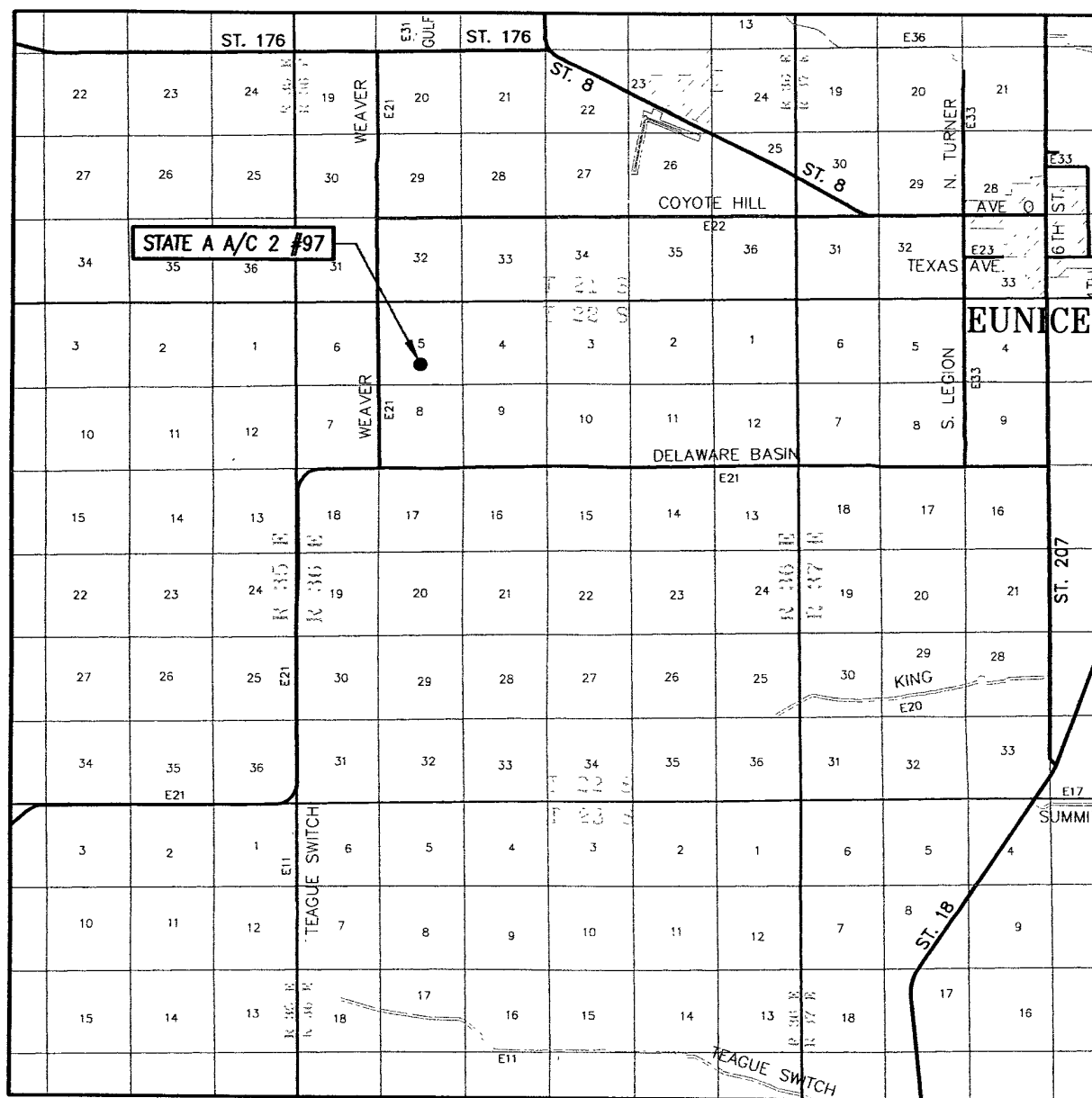


**PETROHAWK OPERATING**

STATE A A/C 2 #97 WELL  
 LOCATED 1304 FEET FROM THE SOUTH LINE  
 AND 2627 FEET FROM THE EAST LINE OF SECTION 5,  
 TOWNSHIP 22 SOUTH, RANGE 36 WEST, N.M.P.M.,  
 LEA COUNTY, NEW MEXICO.

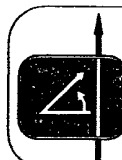
Survey Date: 6/30/08	Sheet 1 of 1 Sheets
W.O. Number: 08.11.1040	Dr By: DSS
Date: 7/7/08	08111040
	Scale: 1"=100'

# VICINITY MAP



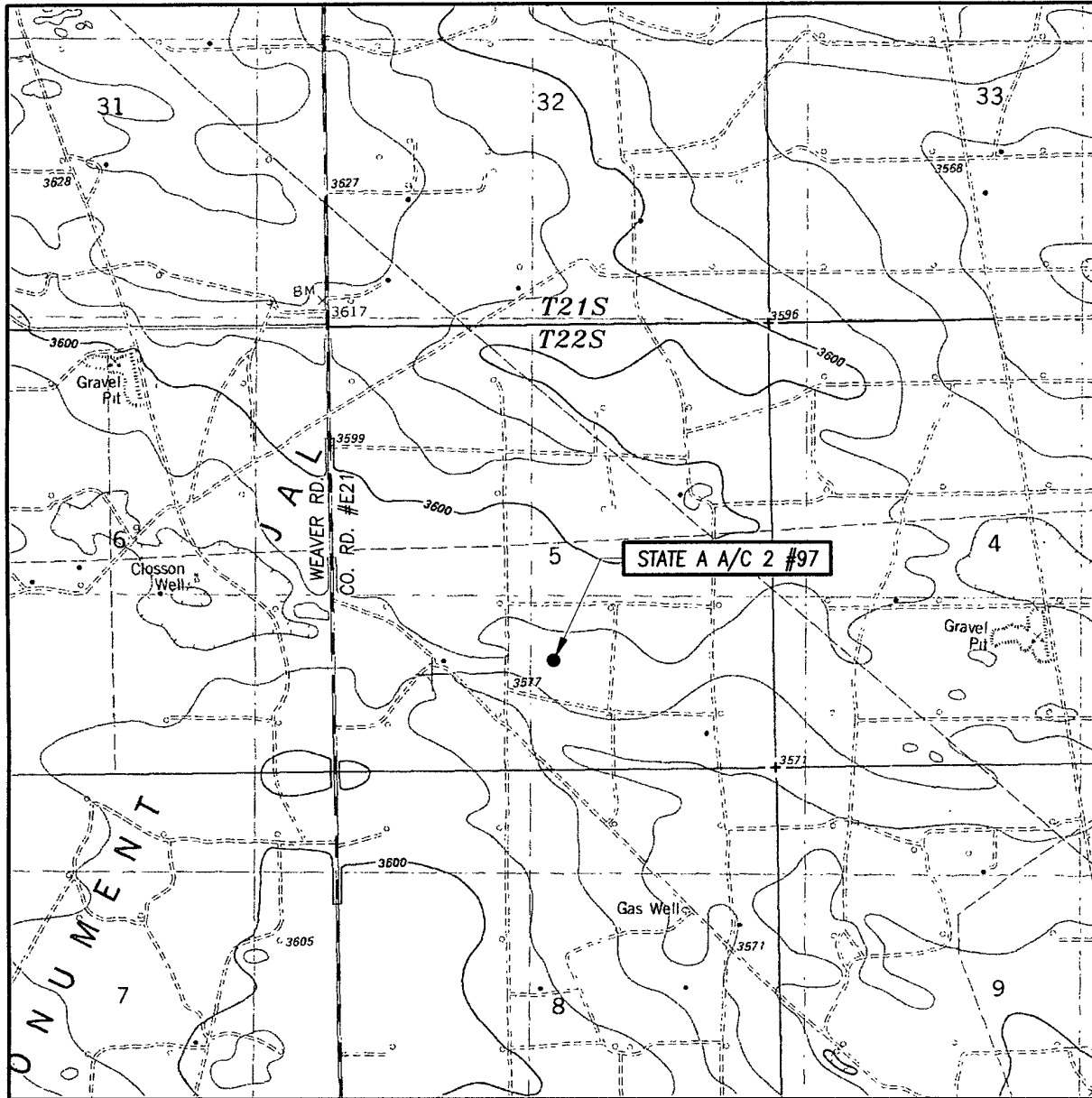
SCALE: 1" = 2 MILES

SEC. 5 TWP. 22-S RGE. 36-E  
 SURVEY N.M.P.M.  
 COUNTY LEA STATE NEW MEXICO  
 DESCRIPTION 1304' FSL & 2627' FEL  
 ELEVATION 3586'  
 OPERATOR PETROHAWK OPERATING  
 LEASE STATE A A/C 2



PROVIDING SURVEYING SERVICES  
 SINCE 1946  
**JOHN WEST SURVEYING COMPANY**  
 412 N. DAL PASO  
 HOBBS, N.M. 88240  
 (505) 393-3117

# LOCATION VERIFICATION MAP



SCALE: 1" = 2000'

CONTOUR INTERVAL: 10'  
OIL CENTER, NM

SEC. 5 TWP. 22-S RGE. 36-E

SURVEY N.M.P.M.

COUNTY LEA STATE NEW MEXICO

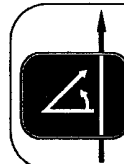
DESCRIPTION 1304' FSL & 2627' FEL

ELEVATION 3586'

OPERATOR PETROHAWK OPERATING

LEASE STATE A A/C 2

U.S.G.S. TOPOGRAPHIC MAP  
OIL CENTER, NM



PROVIDING SURVEYING SERVICES  
SINCE 1946  
JOHN WEST SURVEYING COMPANY  
412 N DAL PASO  
HOBBS, N.M. 88240  
(505) 393-3117